

## <<Global Networks>>



**追求創新高品質 產業結盟創價值**

Quality-Innovation & Appreciated by Industry Alignment

<http://www.huarong.com.tw>

### 總部:華嶸精機 / 南嶸科技 / 煜達機械 (Headquarter & Taiwan Factory)

72351 台南市西港區慶安里中州 21 之 6 號  
No.21-6, Zhongzhou, Xigang Dist., Tainan City 72351, Taiwan  
TEL:+886-6-7956777 FAX:+886-6-7951666  
E-mail:roy@huarong.com.tw

### 無錫華嶸數控 / 無錫南嶸機械設備 (Wuxi Factory)

江蘇省宜興市官林鎮義莊村遠大路  
Yuanda Road, Yizhuang Village, Guanlin Town, Yixing City, Jiangsu Province, China  
TEL:+86-510-87207622, 87203688 FAX:+86-510-87207619, 87207620  
E-mail:hr205@huarong.com.tw

### 煜達機械 (Taiwan Office)

22151 新北市汐止區福德二路 215 號 3 樓之 5  
3F.-5, No.215-5, Fude 2nd Rd., Xizhi Dist., New Taipei City 221, Taiwan  
TEL:+886-2-2694-6450~3 FAX:+886-2-2694-6454  
E-mail:yuhdak@ms19.hinet.net yuhdak.wu@msa.hinet.net  
Website: www.yuhdak.com.tw

### 東莞市石碣冠明機械廠 (Dongguan Factory)

廣東省東莞市石碣鎮崇德路三村工業區  
Chongde Rd., Shijie san Village, the second industrial Dist.,  
Shijie Town, Dongguan City, GuanDong Province. China  
TEL:+86-769-8663-2085 or +86-769-8632-3347 FAX:+86-769-8631-1235  
E-mail:yuhdak@163.com Website:www.yuhdak.com/cn



A16L01.a



# HUARONG GROUP

Vertical  
Horizontal  
Automation



**NANRONG HUARONG YUHDAK**

**射出成型機製造專家**  
**立、臥、多射及自動化專家**  
**Vertical & Horizontal** all your molding needs



Your Best **Solution**



**Taiwan**  
Excellent Injection Molding Machine

達成生產是我們的責任

**Huarong Group** Motivate your business value.

集團秉持著卓越品質與優質服務，提供客戶對塑膠臥、立式射出及多射成型機的所有需求，並結合自主研發的自動化設備，提供整廠智慧工廠服務規劃。

我們的專業團隊，提供客戶最可靠、最耐用、最適用的產業設備，公司亦通過ISO9001/2000、CE安全規範的各項產品認證，為客人做第一線把關，並以實現客戶滿意為職志。

HUARONG PM, based on exceptional designs & quality services from the last 30 years, offering injection molding needs from both vertical & horizontal applications. Infused with full aspect automations for smart machine.

Dependable, reliable, and durable designs with ISO9001/2000 & CE certified. HURONG brings you the equipment for the most satisfaction.

## 1. 公司簡介 / Company Profile

## 2. 設計特色 / Design Features

機械結構 / Mechanism	03
安全結構 / Safty	03
臥式肘節夾模設計 / Horizontal Toggle Clamp	04
內曲式肘節夾模系統 / Inward Toggle Clamping	04
互動外曲式肘節系統 / Interactive Outward Toggle	04
兩板式夾模系統 / 2-platen clamping system	05
動力系統 / Driving system	06
液壓系統 / Hydraulic	06
立、臥式機-電控系統 / Controller	07
自動化系統 / Automation Systems	09

## 3. 臥式產品 / Horizontal Products

HDC 雙射出成型機 / HDC CO Injection Molding Machine	11
IML 模內貼標射出成型機 / IML In-mold labeling Injection Molding Machine	12
HMC 熱固性濕式射出成型機 / HMC-Bulk Moulding Compound Injection Molding Machine	13
PET 瓶胚射出成型機 / PET Preform Injection Molding Machine	14
BL 熱固性電木射出成型機 / BL Thermosetting Bakelite Injection Molding Machine	15
Q 薄片高速射出成型機 / Accumulator High-Speed Injection Molding Machine	15
PVC 硬質射出成型機 / PVC Rigid Injection Molding Machine	16
M 醫療同服射出成型機 / M Servo Hydraulic Injection Molding Machine For application of Medical Parts	16

## 4. 立式產品 / Vertical Products

YH - V 1S / 2S 立式開模立式射出系列 / YH - V 1S / 2S Vertical Clamping Vertical Injection Series	17
多重嵌入射出機圓盤系列 / Multiple Embedded Rotary Injection Molding Machine Series	17
無柱立式開模臥式射出系列 / Vertical Clamping Horizontal Injection Tie-barless Series	18
無柱開模立式射出系列 / Vertical Clamping Vertical Injection Tie-barless Series	18
高速精密立式射出成型機 / High Speed Precision Vertical Injection Molding Machine	19
立式開模立式射出四柱雙射圓盤系列 / Vertical Clamping Vertical Injection Two Colors Four Columns Series	19
立式開模臥式射出四柱系列 / Vertical Clamping Horizontal Injection Four Columns Series	20
線材專用機 / Wire / Plug Machine	20

## 5. 模版尺寸圖 / Template size map

21

## 機台樣式與顏色 / Machine Appearance & Color



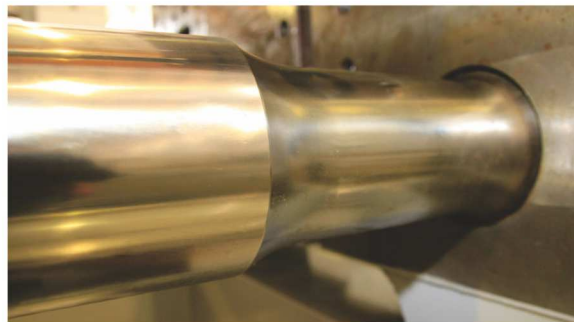
[http://china-plastic-machinery.cn/hr\\_spec](http://china-plastic-machinery.cn/hr_spec)

詳細規格於網址查詢或手機直拍 QR code  
Detail specifications available in webpage or QR code.



## 機械結構 / Mechanism

堅固、可靠、耐用 Durable, reliable, and easy maintenance.



### 專利細頸大柱設計

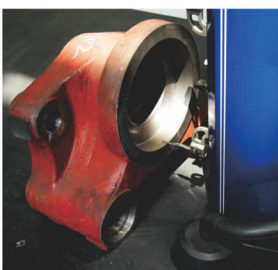
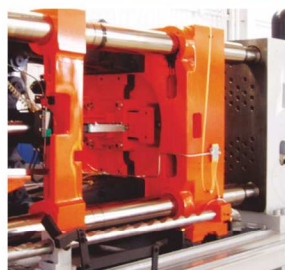
Patented Groove design with the tie-bars.

受力平衡的拉桿專利設計，精密可靠  
Balanced & equalized clamping spread.

### 箱型模板堅固可靠的夾模機構

Box-type platen maximized the clamping durability.

箱型模板透過電腦應力分析其鋼性高、變形小、不斷裂  
Computerized digital analysis to the stress & rigidity.



### 3D量測精密準確

3D precise analysis manufacturing.

透過精密3D量測，可確保每個生產零件的精密準確性。  
All devices & parts are with 3-dimensional precisely analyzed for accuracy.

## 安全結構 / Safty

安全、操作方便、好保養 Safe, Convenient operation, Easy maintenance



### CE 安全模組

CE - safety module.

### 集中式配油閥

Centralized progressive lubrication.

集中式黃油補充系統，並具備安全壓調整，保養容易。  
With progressive distributors ensuring equalized lubrication efficiency.



### 專利可拆式板金

Patented removable shield.

專利安全門開關設計，並搭配可拆式板金門，方便拆裝保養  
Combined with flip-able shield covers for easier cleaning & maintenance.

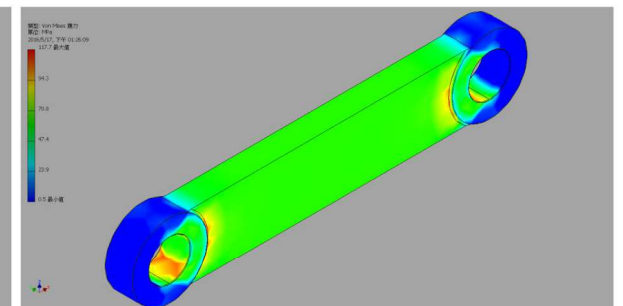
## 臥式肘節夾模設計 / Horizontal Toggle Clamp

### 內曲式肘節夾模系統 / Inward Toggle Clamping

合理成本、穩定耐用 Cost-effective, Stable & Durable.

領先業界多年經驗，合理設計與成本、穩定、堅固、可靠、易保養與維護。  
Years of experience with advanced designs for professional applications.

肘節夾模系統經由電腦以專業有限元素(FEA)分析，剛性高、不易變型及斷裂。  
Dynamic computation with FAE analysis ensuring the mechanism durability.



### 互動外曲式肘節系統 / Interactive Outward Toggle

機器短、速度快、開模行程長 Compact Structure with Faster Clamping and Bigger Opening.

鎖模缸前移，設備長度縮短 18%

Shifted clamping cylinder reduced 18% machine length.

鎖模油壓缸活塞行程縮短約40%

40% shortened clamping cylinder.

提升開模行程 20%

Enlarged opening stroke.

鎖模缸中心定位精密，鎖模力對稱

出力不偏移，開關模動作平穩流暢  
Precise alignment & centering ensuring parallel & collateral clamping movement.

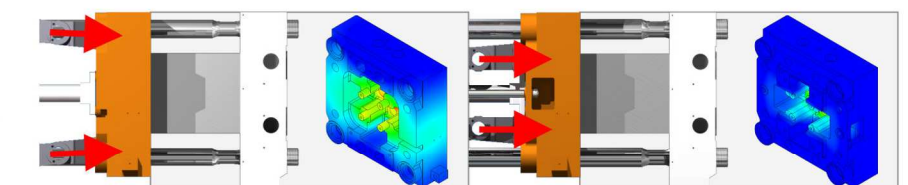
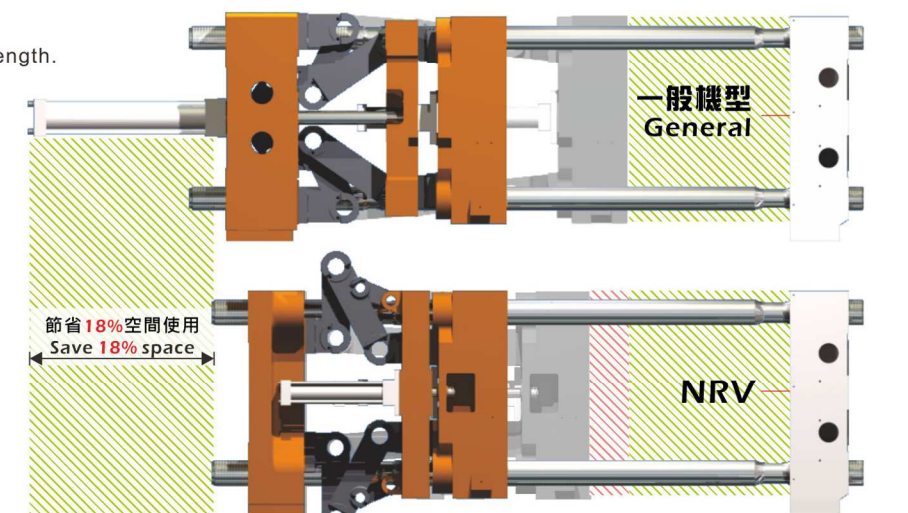
新式鎖模缸，開模快速定位精準，  
機械手臂取物不失誤

Advanced cylinder design brought accurate positioning, ensuring robotic automation.

外曲式鎖模力與活動壁變形量比較

Platen deformation analysis.

外曲式曲肘鎖模力集中於活動壁中心，直接作用於模具上，以有限元素 (FEA) 分析，活動壁減少變形量約55%  
Center-forced clamping with 55% minimized deformation, by FEA.





## 兩板式夾模系統 / 2-platen clamping system

縮短大型設備長度、開模行程長 Minimized machine length with maximized opening stroke.

機械尺寸比曲肘式縮短約 20%~30%

20% ~ 30% less from machine length, compare with toggle design.

節省長度及擺放空間，協助用戶大幅減少建廠支出，提高利用率  
Less space required from a molding facility.

托模油缸採埋入式設計

Built-in design with ejection cylinder.

有效縮短機台長度  
Minimized machine length effectively.

具備快速且全自動調模

Fully automatic mold-close adjustment ready.

節省模具更換時間，智慧財產局第I279312號發明  
Less time needed from mold change. Paten #I279312, Intellectual Property Office, MOEA, Taiwan.

可選配生產需要特別加長開模行程

Available option for additional stroke from opening.

克服曲肘式固定開模行程缺憾，無須因開模行程不足而選更大機台  
Spare the larger machine needs for bigger opening stroke.

可選配大柱脫離

Available option with Retractable Tie-bar function.

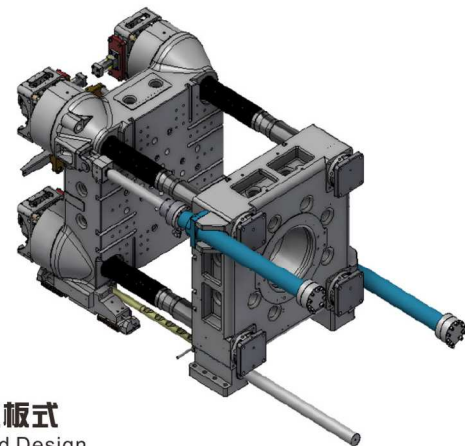
配合特殊功能模具吊模固定，不需增高廠房即可使用較大型機種  
With additional mold lifting module to accommodate jumbo machines in regular facility height.

油缸直壓鎖模，模具不變型，可延長模具壽命。

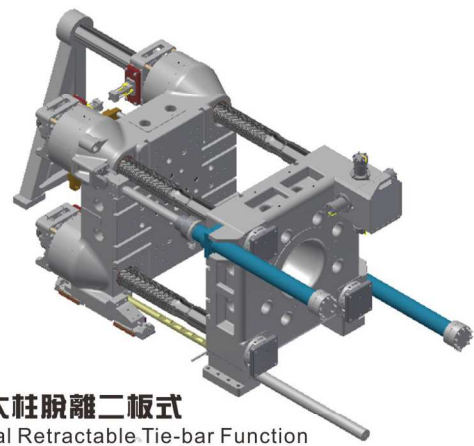
Extended Die service expectancy without deformation thanks to hydraulic cylinder clamping parallelism.

高壓鎖模行程小，可快速鍵立鎖模力。

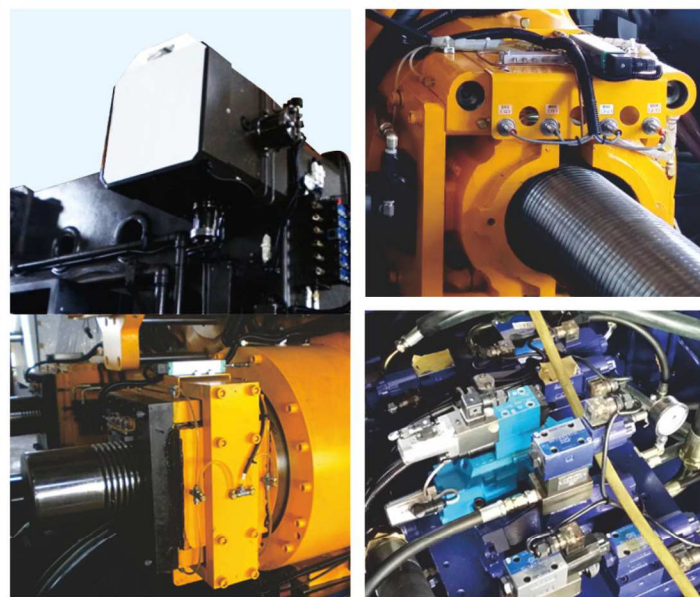
Shortened high-pressure clamping stroke thanks to ability of fast building clamping force.



標準二板式  
Standard Design



選配大柱脫離二板式  
Optional Retractable Tie-bar Function



## 動力系統 / Driving system

環保節能的動力 Green power.



日本Yuken定量泵 / YUKEN (Japan) fixed pump.

電機馬達搭配日本YUKEN定量泵，提高效能與動力輸出。  
With AC motor combines (YUKEN) fixed pump performing superior output & efficiency.

搭配變頻器節能系統（選配）Inverter (for option)

搭配變頻器節能系統，可控制轉速快慢達到節能效果。  
With (optional) inverter system performing power saving.

系統響應時間為 40ms~50ms / Responding performance at 40ms~50ms



伺服馬達節能系統（選配）/ servo motor (for option).

改用伺服馬達節能系統，省電效率加、反應時間快，提高生產精密度  
With (optional) servo motor replaced performing advanced power saving, superior system reaction & molding accuracy.

### 動力系統功耗比較

Power consumption comparison

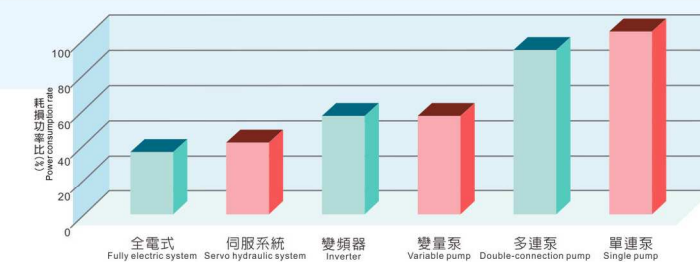
多項專利 Patented

新型第M327493號 射出成型機射料管之溫度控制模組

Modularized temperature control from injection unit"

新型第M328970號 射出成型機之油電動力控制系統

Controller system for servo-hydraulic"



## 液壓系統 / Hydraulic

優化的規劃設計 Superior scheme & design.



邏輯迴路 / Logistic loop.

220N以上機種，全系列使用邏輯迴路，並採用日本油研 (Yuken) 方向閥，壽命長、穩定性高  
With logistic loop combines YUKEN (Japan) directional valves, for tonnage above 220ton.



日本NOK油封

NOK (Japan) seals.  
採用日本NOK油封壽命長  
Superior seals for excellent performance.



高壓軟管1"以上

採用瑞典製 HydrauPow  
HydrauPow (Sweden)  
high-pressure hoses, for up to 1".



高壓軟管1"以下

採用日本製 YOKOHAMA  
YOKOHAMA (Japan)  
high-pressure hoses, for up to 1".



# 立、臥式機-電控系統 / Controller

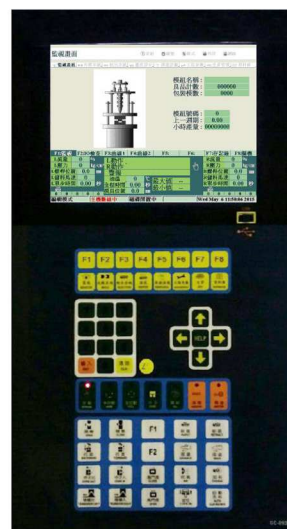
人機介面方便操作，設備可靠穩定 Human-friendly interface.



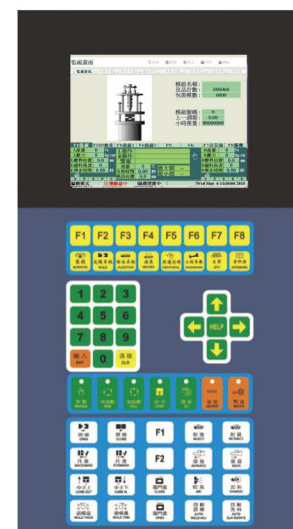
BL-870



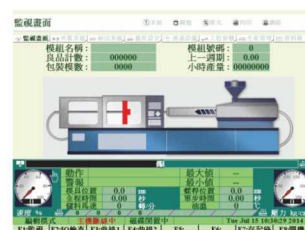
BL-920



BL-890



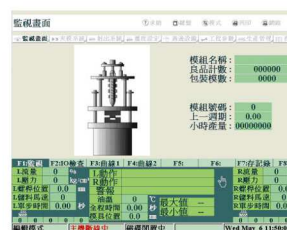
BL870



臥式控制器畫面 Controller Display



臥式SPC生產管理 / SPC (Statistical Process Control) function.



立式控制器畫面 Controller Display



立式SPC生產管理 / SPC (Statistical Process Control) function.



智慧機械，可以與任何的設備溝通  
Smart machine, connect your facility.



運用智慧機械概念，控制器透過感測器與數據比對，能自我達到安全自檢功能，生產設備與資料庫平台透過網路串聯使所有設備、管理者可直接溝通，達到全面化生產管理。With smart-machine concept, combining sensors to all equipment and managing data on single controller. Effective connection for entire monitoring.



DC電氣箱 DC Electric box



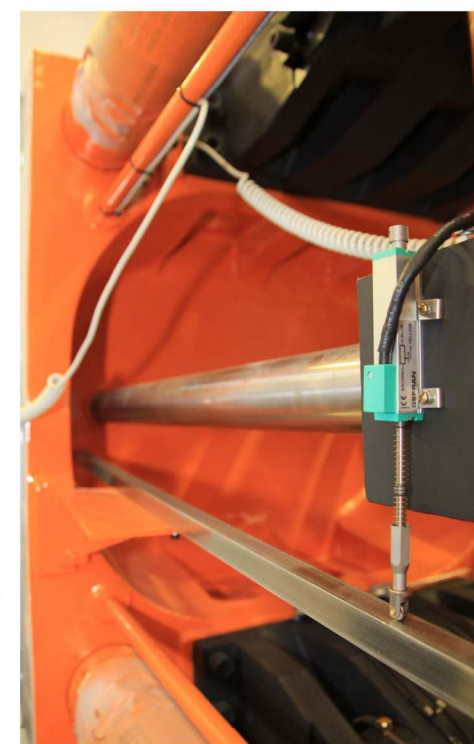
AC電氣箱 AC Electric box

AC、DC箱分離 / Individualized AC & DC cabinet.

AC、DC箱分離，防止干擾系統更穩定；SSR+半導體快速保險絲，迴路保護更快速，夾模開關電位尺採用GEFRAN義大利進口電位計控制精確，採獨立接地端子，防護更安全、維護更方便。Separated electrical (AC/DC) cabinet for interference-free, with independent grounding terminal, circuit protection by SSR (solid state relay) with semiconductor high-speed fuses.

專利斜板電位尺 / Bevel-type Potentiometer

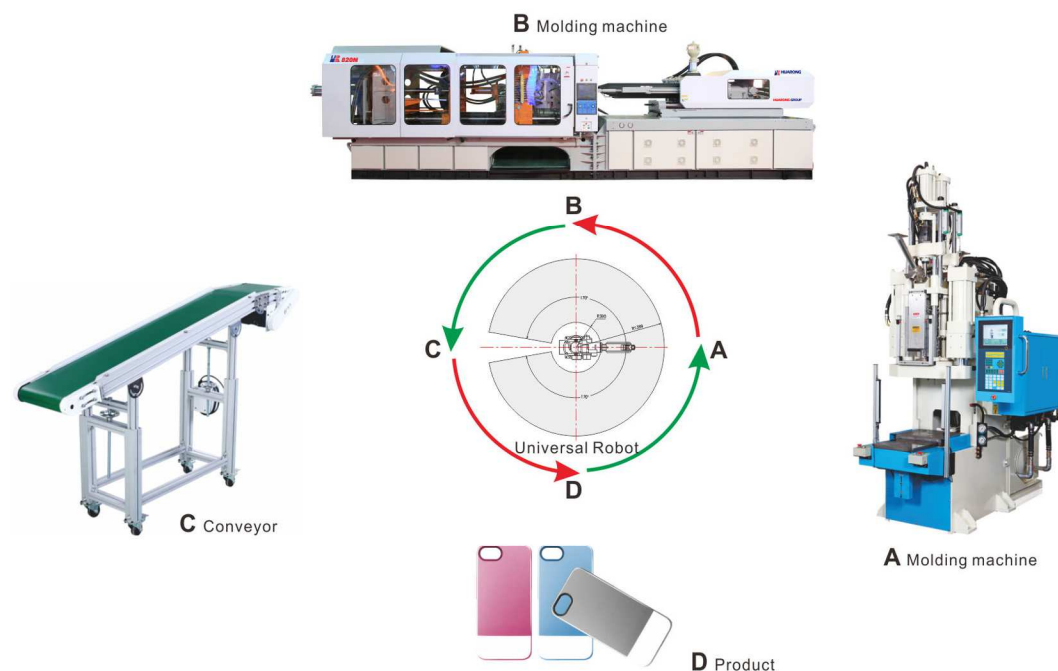
斜板光學尺，減低光學尺的故障，延長使用期限  
Bevel-type potentiometer for clamping stroke, by GEFRAN (Italy).





## 自動化系統 / Automation Systems

全自動化生產、精準、確實 Fully automated production, precision, indeed



## 自動化控制生產，提高經濟效益，贏向未來

Automation control production, improve economic efficiency, to win the future.



自動化萬向機械手，穩定性高、靈活性強、操作簡單，全電腦化控制提高生產效率，縮短工作週期以及提高產能，並能在最小耗能的情況下做最大化生產。  
Automation Universal (Multidirectional) Robot, high stability, flexibility, simple operation, the entire computer control to improve production efficiency, shorten cycle times and increase productivity, and can do to maximize production with minimal energy consumption.

以最優秀的性能，提昇生產效率，實現最高精準度。  
Through the best performance to improve productivity, and achieve the highest accuracy.

## 需求分析 / Requirement analysis

通過對客戶生產的瞭解和與客戶對流程的討論需求進行基本建模，最終形成需求規格。  
By understanding for customer production and for customer's process demand to carry on the modeling, and eventually formed the requirements specification.

## 總體設計 / Overall design

通過分析需求資訊，對系統的外部條件及內部需求進行建模，最終形成設計說明。  
By analyzing the demand information, for the system's external conditions and internal demand to carry on the modeling, and eventually formed the design description.

## 詳細設計 / Detailed design

此部分在對需求和概要設計的基礎上進行的詳細設計  
Execute detailed design that for the basis of demand and outline design.

## 開發程式設計 / Developed programming

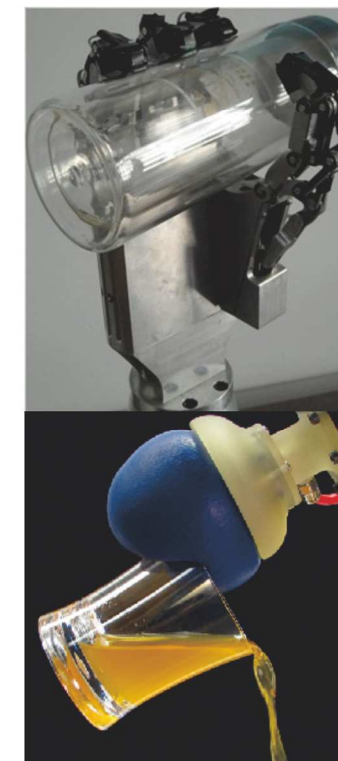
對系統進行程式編寫  
System programming.

## 測試分析與系統整合 / Testing analysis and system integration

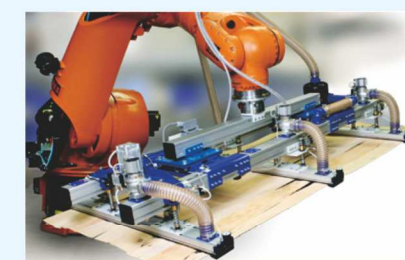
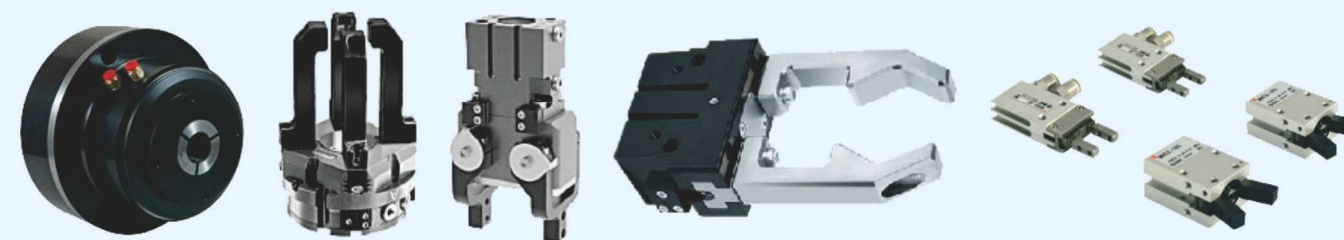
對所有功能模組進行類比資料測試及其它相關性測試並整合  
Analog data test for all functional modules along with other related tests and integrated.

## 現場支持 / Onsite support

系統上線試運行進行現場問題記錄、解答  
System On-line test run to execute onsite problem record and answer.



## 電動抓取模組 Electric Gripping Modules

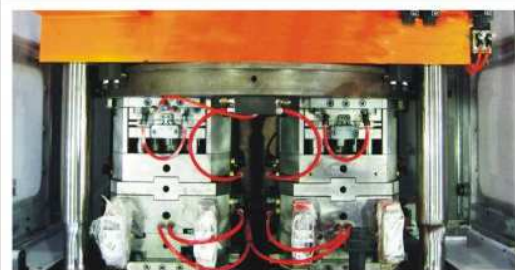




**HDC**

## HDC 雙射射出成型機

### HDC CO Injection Molding Machine



#### 專利轉盤設計

##### Patented Turntable Design.

專利轉盤在模具交換或開關模時，模具可精準定位，使模具與車壁貼緊度更為良好。專利設計防止模具下墜。  
Patented rotary platen, with accurate positioning for tilt-free.

專利轉盤轉動順暢，轉盤機械、電器、油壓三重定位確認，模具受到高度保護，正反轉定位百分百。  
Accurate positioning with triple control by mechanical, electrical, and hydraulic for perfect reciprocation.



#### 轉盤採外齒式設計 轉動與定位快速準確

External gear drive, rapid on rotation & accurate positioning.



#### 伺服轉盤定位系統(選配裝置)

##### Servo-drive Rotation (Optional)

與傳統油壓轉盤相比，啟動時間短，運動過程平穩，達定位點後直驅煞車，無速度緩衝問題。  
每次轉動到位精準。  
Accelerated movement with accurate positioning & direct-break complete the rapid rotation.



#### T型射出機(標準機選配改雙射)

##### T-type injection molding (Option)

您目前已採購華榮標準機，您可選配增加T型射座使單射變雙射。  
Alternative (optional) injection unit to convert a standard (mono-injection) machine into a T-type co-injection system.

#### 三射射座系統(選配裝置)

##### 3rd injection unit (Optional)

可搭配第三射座進行三色射出。  
Join to complete a triplex molding

我們可依照您模具需求設計多射系統  
Customized injection available for mold designs.



高速精密、穩定度高

High Precise and Stable

雙射產品專用機種，您雙射產品的最佳選擇  
2-color/2-component molding application.

**IML**

## IML 模內貼標射出成型機

### IML In-mold labeling Injection Molding Machine

#### 高效率、高良率 / Performance & Efficiency

整體結構、控制精度與穩定度的提升，生產良率可高達98%以上，並可縮短生產週期。  
Advanced structure, improved stability, and accurate control, with yield rate up to 98% in shorter cycle.

#### 技術領先 Leading Technology

產品為16L大型油漆桶，是目前業界貼標最大的產品。  
16-liter IML pail, the largest size in application up to now.



#### 機台與供標系統機構一體化結合 / Integrated system

業界唯一，機台與供標系統一體化設計，增加整體機構強度，避免長時間使用下兩設備分離或標貼準確變差等問題。  
Unified system with designs from preprint label to system integration and matchup, maximized the accuracy & efficiency.

#### 伺服側取機械手臂 / Side-load servo robotic system

專利「新型模內貼標籤手臂兩軸平移裝置」，生產快速精準，並是目前業界最大16公升平移機械手臂裝置，可提供大型貼標塑件生產。  
Balanced horizontal shifting for duo-axis against twin-arm robot in IML solution. Ultimate accuracy with capacity to 16liter application.

#### 取標供標機構 / Labeling automation

精確吸取貼標，並可精確將貼標置於模仁上。Precise positioning against robotic automation performing accurate label transfer.

#### IML專用模具 / IML mold

可因應客戶需求設計，模內貼專用模具，我們並擁有「新型第M284529號長桶型模具離模構造」專利。  
Customized design with labeling automation, and against patented solution (#M284529), large stroke de-molding design.

#### 專利貼標圓盤供紙機構 / Patented rotary label supply

專利自動送紙圓盤機構，供紙不中斷。Ensuring label supply needless system stop.



#### 多項專利 Patented

新型第M346579號 模內貼標籤服貼裝置 IML label anchoring device  
新型第M284529號 長桶型模具離模構造 Minimized de-molding structure  
新型第M351844號 模內貼標籤供紙結構 IML label feeding system  
新型第M293838號 大型單元物品模仁貼標籤結構 IML solution for large parts  
新型第M352509號 模內貼標籤手臂兩軸平移裝置 IML label parallel feeding tools system



專業模內貼標自動化設備

Professional In-Mold-Labeling System



**HMC**

## HMC 熱固性濕式射出成型機

### HMC-Bulk Moulding Compound Injection Molding Machine



**自動填料裝置 / Auto loading device.**  
填料快速節省人力成本  
Efficient loading work with less manual job required.

**ACC蓄壓裝置(選配) / Accumulator (option)**  
ACC射出裝置提高射出率，使成品光亮固化快速  
Accumulator-assisted (optional) for lifted injection rate, product surface & rapid forming.

**填料平台樓梯**  
Convenient loading ladder platform.

**車壁隔熱板 / Isolation boards.**  
防止模具高溫熱傳導至車壁 Isolate the heat transferring to the platens.

**各段獨立模具加熱控制器**  
Each heating section regulated by individual temperature controller.

**使用特殊耐腐蝕抗磨耗螺桿**  
Additional anit-corrosion, wearing proof screw.  
提高螺桿壽命 Advanced performance with most durability.



**適合抗腐蝕、產品生產**  
Corrosion proof application



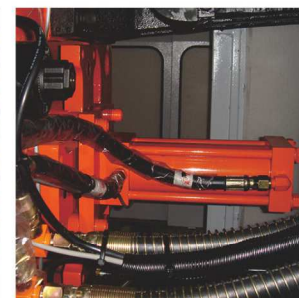
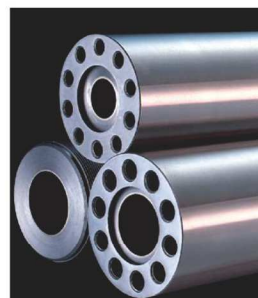
省時、快速精準

Time-saving, High speed and precision

**PET**

## PET 瓶胚射出成型機

### PET Preform Injection Molding Machine



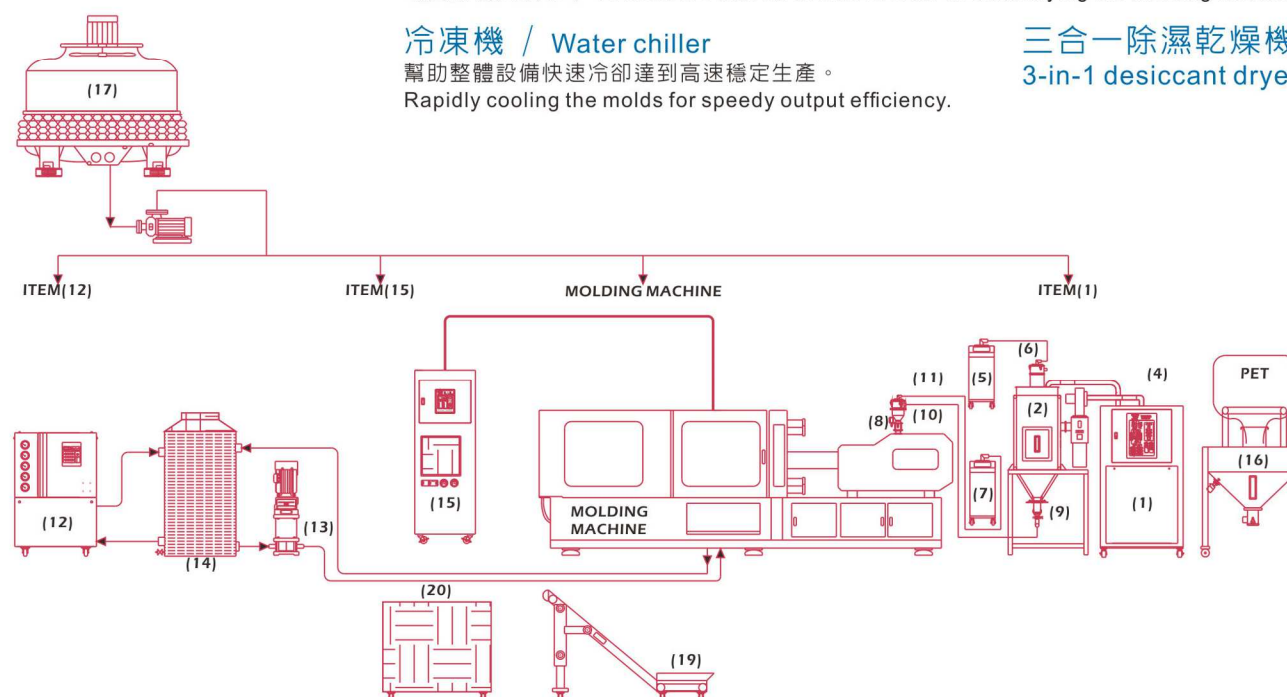
**PET專用螺桿料管組 / Injection screw & barrel**  
採用低剪切、高融化、雙螺紋PET專用螺桿，效率高品質佳  
Lower shearing, higher plasticization, and with double-waved for ultimate performance.

**托模裝置 / Ejector**  
托模力加大，方便快速頂出成品  
Enlarged force performing ejection efficiency.

**上滑板冷氣孔搭配除露機 / Sliding roof**  
可去除模具露水 / To combine with air conditioner for dehumidifying the molding chamber.

**冷凍機 / Water chiller**  
幫助整體設備快速冷卻達到高速穩定生產。  
Rapidly cooling the molds for speedy output efficiency.

**三合一除濕乾燥機**  
3-in-1 desiccant dryer



**PET 瓶胚專用機，精度高、速度快**  
PET bottle preform molding, rapid & accurate



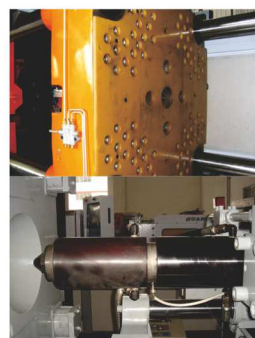
高精密度、高速生產

Better accuracy, High speed production



**BL**

## BL 熱固性電木射出成型機 BL Thermosetting Bakelite Injection Molding Machine



日常生活耐熱、耐腐蝕用品、電訊、電器絕緣零件  
Heat-resistant & Anti-Corrosive household items and Insulative Electronic and Electric items.

車壁隔熱板 / Isolation boards.  
防止模具高溫熱傳導至車壁 Isolate the heat transferring to the platens.

電木專用料管螺桿組 / Thermosetting screw & barrel.  
耐熱、抗腐蝕專用料管，螺桿組 Heat-resisted with wearing/corrosion proof.

料管採專用模溫控制 / Temperature controller for barrel heating.  
模具模溫獨立加熱控制 Individual temperature controllers regulating injection barrel & tools.



耐高溫、絕緣產品製造專用機種  
High temperature resistant, insulation

耐高溫、絕緣產品製造

High Temperature Resistant, Insulation

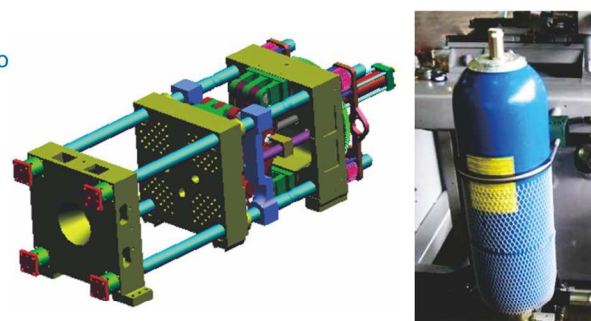
**Q**

## Q 薄件高速射出成型機 Accumulator High-Speed Injection Molding Machine

大柱加大，模板加厚（將應力分析圖與3D立體結構圖與本圖合成一起）  
Reinforce mechanism with stress analysis against 3D structure projectio  
提升整體機構耐用度，整體機械結構加強20%  
20% mechanical strength improved for durability.

高速射出機構 / High-speed injection structure.  
搭配高速射出機構，是堅固耐用的高速機種  
Designed to accommodate accumulator assisted high-speed injection.

ACC蓄壓器 / Accumulator  
伺服閥配合ACC蓄壓器，提高速度，反應時間快  
Combine with servo valve maximized the performance of injection speed & system efficiency.



高速薄件生產機種，高速精準、塑化能力強  
Thin-walled/high-speed molding application.



高速精準、塑化能力強

High speed with accuracy, High plasticizing

**PVC**

## PVC 硬質射出成型機 PVC Rigid Injection Molding Machine

加寬板金設計 / Width extended shield.  
配合多中子運作空間 / More space to accommodate tool piece of core-puller cylinder.

PVC/CPC 專用螺桿 / PVC/CPC screw.  
PVC/CPC專用多段壓縮螺桿料管組 / Multi-section compression design.

防腐蝕複合金屬處理 / Bi-metalized treatment for anti-corrosion.  
採用低剪切、高融化、雙螺紋PVC專用螺桿，效率高品質佳  
Lower shearing, higher plasticization, and with double-waved for ultimate performance.



PVC 硬質產品專用機，穩定效率高  
PVC rigid application, stabilized & efficient



穩定性高、高效率

Stabilize, Efficient

**M**

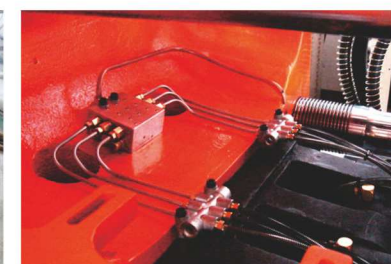
## For application of Medical Parts M 醫療伺服射出成型機 M Servo Hydraulic Injection Molding Machine

結合全電式射出機的優點  
Dapted features from Fully-Electric machine  
高應答、高重現性、靜音及省能源  
Rapid Respond, Excellent Reproducibility, Noize-free, and Energy Saving.

上滑板蓋  
Roof shield  
於設備上方加裝上滑板蓋防止污染  
With slide shield on top of molding chamber ensuring contamination free.

曲手打黃油優點  
Advantage of grease lubrication

- 每次潤滑的油量固定，每個曲手潤滑點可獲同樣的潤滑油量。
- 降低潤滑油對產品的污染。
- 採用黃油嘴加入油料之方式，降低油料之異物混入。
- 附壓力錶裝置，可查知壓力是否正常。
- Fixed propotion & volume of lubricant to every spot.
- Less contamination from lubricant.
- Grease nozzle for contamination-free.
- Pressure gauge monitoring the performance.



潔淨無污染、高精密、省能源

Clean non-polluting, Hing Precision, Power Saving



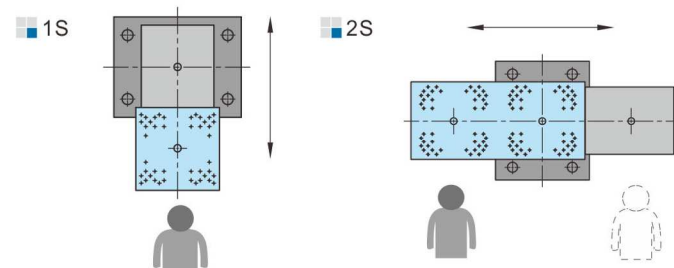
**YH**

## YH 系列 / YH Series

YH-V 1S / 2S 立式關模立式射出系列

YH-V 1S / 2S Vertical Clamping Vertical Injection Series

- 立式四柱直立鎖模，直立射出，採長方形柱內設計，便於嵌入
- 射出採用雙缸平衡式結構，射出平穩有力。
- 直立式鎖模，能快速下降合模與慢速低壓合模，對模具的壽命，更能持久
- 1S單滑模：在開模後下模自動滑移到操作者正前方，更便於鑲嵌件成型作業
- 2S雙滑模(交替式雙滑模)：
  - 一機在注塑成型，一機在外做取件與放鑲嵌件的工作，生產效能更高。
- Four-column/vertical clamping, vertical injection. Rectangular shape between tie bars for easy insert.
- Twin injection cylinder balanced for smooth and powerful injection.
- Double action clamping cylinder for fast clamping, slow speed high pressure clamping.
- Single sliding pushes the lower mold out for easy loading/unloading.
- Double sliding use two lower mold, machine molding the parts while the operator is loading the other mold, to increase productivity.



**YR**

## YR 系列 / YR Series

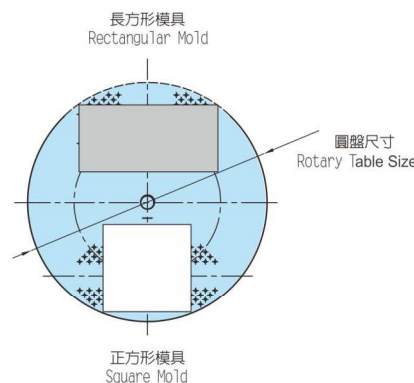
多重嵌入射出機圓盤系列

Multiple Embedded Rotary Injection Molding Machine Series

- 圓盤在同一水平面做180°來回交替旋轉，可讓操作者在固定操作面做取件與放嵌件，工作方便生產效率高
- 圓盤面的定位，以固定銷鎖住，可確保圓盤旋轉停止後，能有高精度的定位，讓成型上下模具更準確合模
- 可加裝自動嵌入與取出等自動化裝置，達成全機全自動化的運轉
- 標準圓盤為2站，有特殊需求可另選3站或4站，達到更方便得操作，及與自動化連線規劃，增加產能

- Four-column/vertical clamping, vertical injection. Rectangular shape between tie bars for easy insert.
- Twin injection cylinder balanced for smooth and powerful injection.
- Double action clamping cylinder for fast clamping, slow speed high pressure clamping.
- Single sliding pushes the lower mold out for easy loading/unloading.
- Double sliding use two lower mold, machine molding the parts while the operator is loading the other mold, to increase productivity.

■ 圓盤模具  
Rotary Table Mold



**YC**

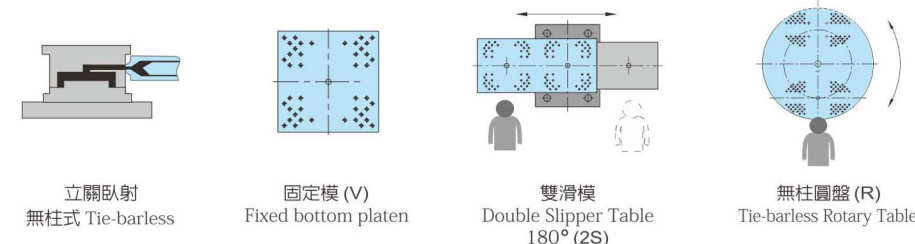
## YC 系列 / YC Series

無柱立式關模臥式射出系列

Vertical Clamping Horizontal Injection Tie-barless Series

- 立式關模，無機柱的機體方式，配合臥式射出，機械結構性強，射出有力，適合較大型嵌合件成型加工。
- 三面空間的開放，使鑲嵌件及成品取放，對特殊長條狀或帶有導線的產品，更加容易作業，更可配合自動連線規劃。
- 操作面的高度，符合人體工學，且整體機器高度低，讓作業環境有更多額外利用空間。

- Vertical clamping, with out machine column design, the mechanical constitutive property is strong, Injection powerfully, suit large-scale embed-ment to take shape the processing.
- Three-sides open space, easier operation for embedded parts and finished products, and able to combine automation connecting planning.
- The height of operating surface is ergonomic, and the height of the machine is low. The operating environment can have more additional space to use.



**YL**

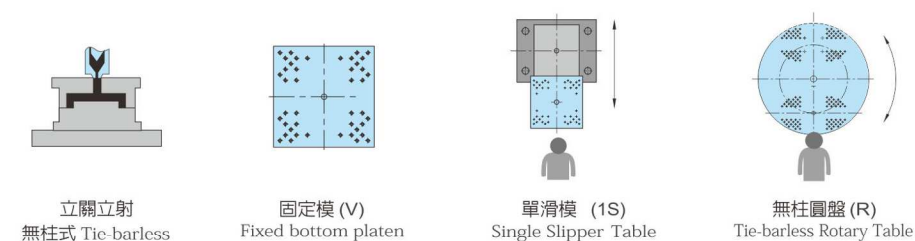
## YL 系列 / YL Series

無柱關模立式射出系列

Vertical Clamping Vertical Injection Tie-barless Series

- 立式關模，無機柱的機體方式，配合立式射出，機械結構性強，射出有力，適合較大型嵌合件成型加工。
- 三面空間的開放，使鑲嵌件及成品取放，對特殊長條狀或帶有導線的產品，更加容易作業，更可配合自動連線規劃。
- 操作面的高度，符合人體工學，且整體機器高度低，讓作業環境有更多額外利用空間。

- Vertical clamping, with out machine column design, the mechanical constitutive property is strong, Injection powerfully, suit large-scale embed-ment to take shape the processing.
- Three-sides open space, easier operation for embedded parts and finished products, and able to combine automation connecting planning.
- The height of operating surface is ergonomic, and the height of the machine is low. The operating environment can have more additional space to use.







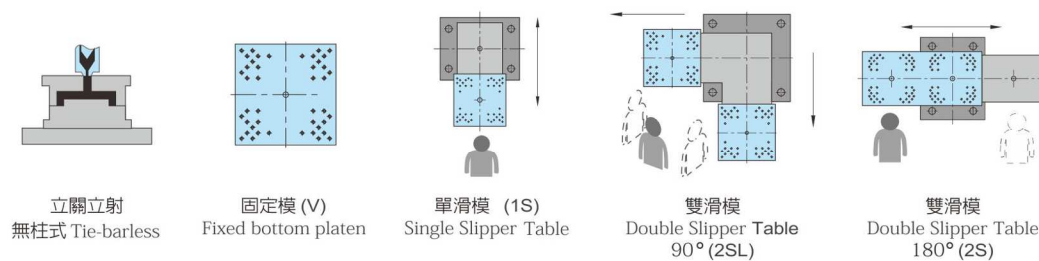
## YQ 系列 / YQ Series

### 高速精密立式射出成型機

### High Speed Precision Vertical Injection Molding Machine

- 採正方形柱內設計，容模尺寸特大，且柱內空間讓客戶更容易加裝自動嵌入與取出成品等自動化裝置，而達成全機全自動
- 螺桿L/D直徑比值大，塑化均一，適用工程塑料的射出成型
- 高規格的電腦控制系統，配合高精度的射出壓力與高應答的射出速度，對高精度的嵌入射出成型品，其品質更加穩定

- The square pillar design comes with large mold size. The space within the column allows customers to install devices of automatic embedding and removing products. This allows automation for the whole machinery. This allows automation for the whole machinery.
- Big L / D ratio of screw, plasticizing evenly, suitable for injection molding of engineering plastics.
- High standard computer control system with high precision injection pressure and high response injection speed. The quality is more stable for high-precision embedded injection molding products.



## YD 系列 / YD Series

### 立式開模立式射出四柱雙射圓盤系列

### Vertical Clamping Vertical Injection Two Colors Four Columns Series

#### 標準雙色

採四柱立式鎖模，並在上模板有2個獨立的立式射出單元（獨立的射出液壓油路）外加圓盤所組合的雙色射出機

- 鎖模力為90TON~500TON，採用電腦控制，特別配置的液壓系統，更適合生產一般或特殊的雙色（雙物料）的射出成型
- 上模板配置二個上模具，圓盤上配置三個下模具，成型時，圓盤120°逆時鐘旋轉，即可完成雙色（雙物料）的射出成型或包覆成型。
- 高效率的圓盤，中間有水套裝置，可供下模具的冷卻運水。

#### Standard double injection

Vertical 4-columns direct-pressure clamping. In the upper mold plate, two separate vertical injection units is installed (separate injection hydraulic oil route) with the addition of round disc for this double injection machine.

- Clamping force is 50- 300TON. Computerized and exclusively configured hydraulic system is used, which is more suitable for the production of general products (or special double-material) injection molding.
- Two molds are installed on the upper mold plate while two lower molds are installed on the disc. When molding, the disc rotates alternatively at 180° to complete the two-color (two-material) injection molding or overmolding.
- Highly efficient disc with water jacket device in the middle for cooling of the lower mold.

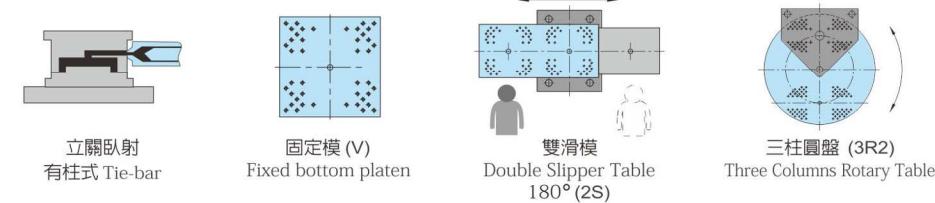


## YT 系列 / YT Series

### 立式開模臥式射出四柱系列

### Vertical Clamping Horizontal Injection Four Columns Series

- 固定模 (V) 及雙滑模 (2S)，採立式四柱直壓鎖模，臥式（水平）射出。正方柱內間距機械結構性強固，可適更大鎖模力達 500 ~ 800TON
- 可以調整的射嘴水平高度，易於模具進料口的中心水平校正，讓模具的設計製作更方便
- 射出平穩有力，適合較大型嵌合件的成型加工，並配合特殊 L/D 長徑比的射出螺桿，更適用工程塑料
- 可擴充電腦程序與自動化的取出，嵌入設備等連線，可達全機全自動運轉
- Fixed mold (V) and the two sliding mold (2S) adopts four-column vertical pressure clamping for horizontal injection. Strong mechanical structure allows greater endurance for clamping force up to 500 ~ 800TON.
- The nozzle can be adjusted in height level, easily for center level correction of mold feed into make mold design more convenient.
- Injection is smooth and powerful, suitable for forming larger fitting Features pieces. With a special L / D aspect ratio of the injection screw, it is more suitable for engineering plastics.
- Scalable computer programs, automatically removing, embedded devices, and other connections allow fully automatic operation of the whole machine.



## YV 系列 / YV Series

### 線材專用機

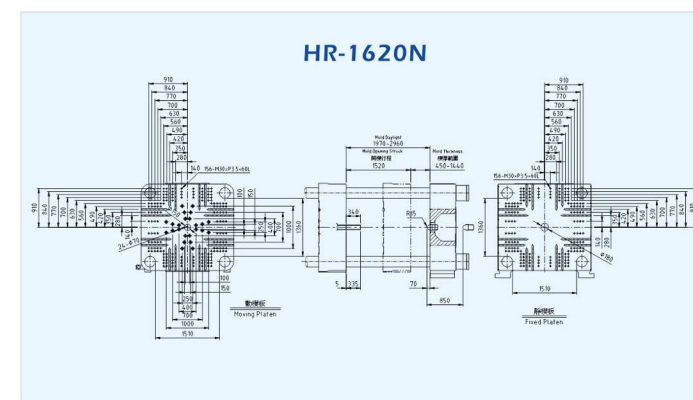
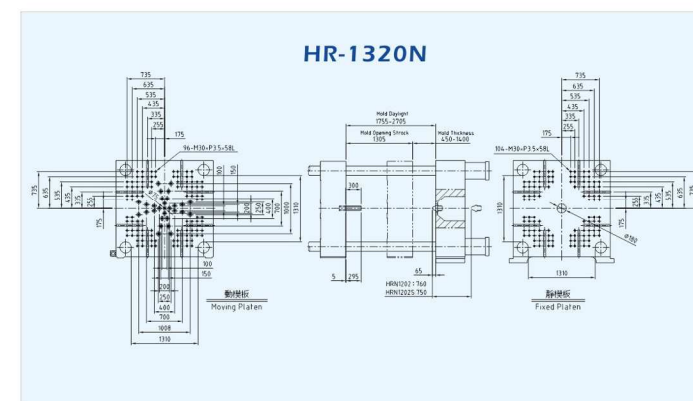
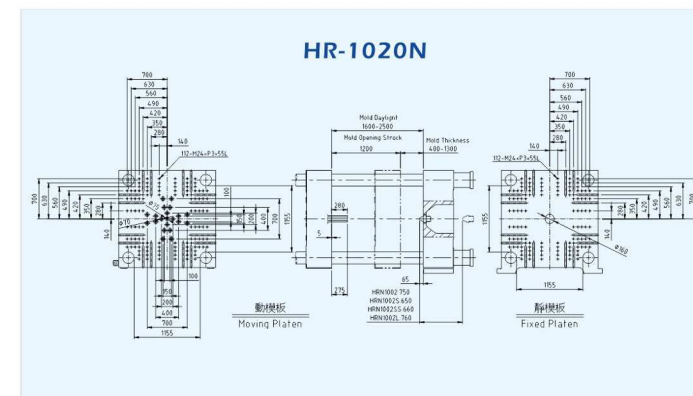
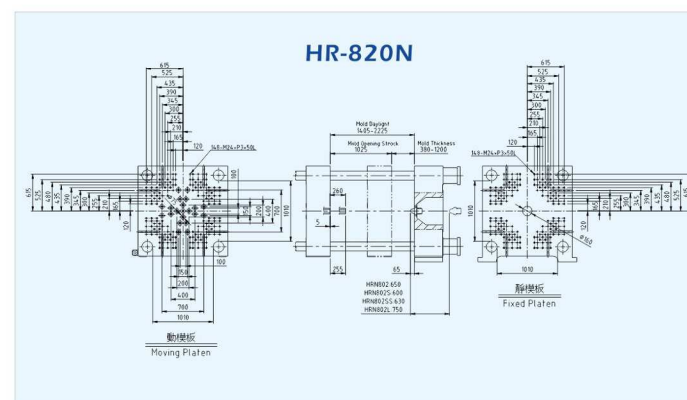
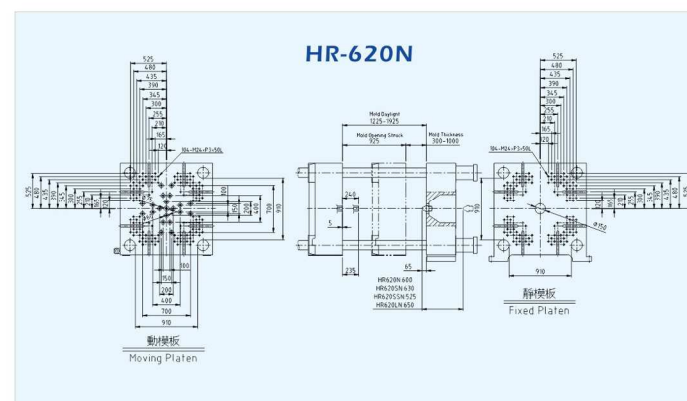
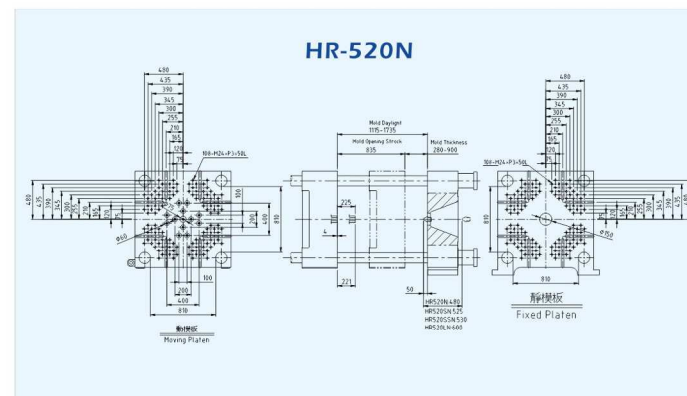
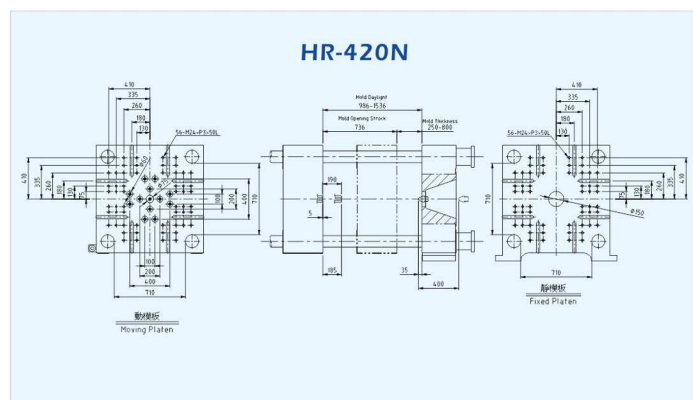
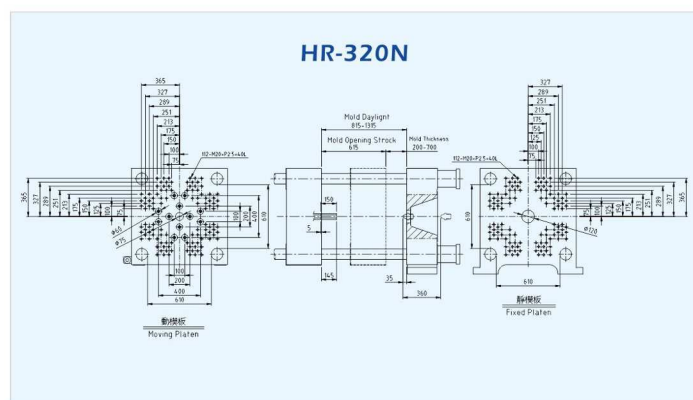
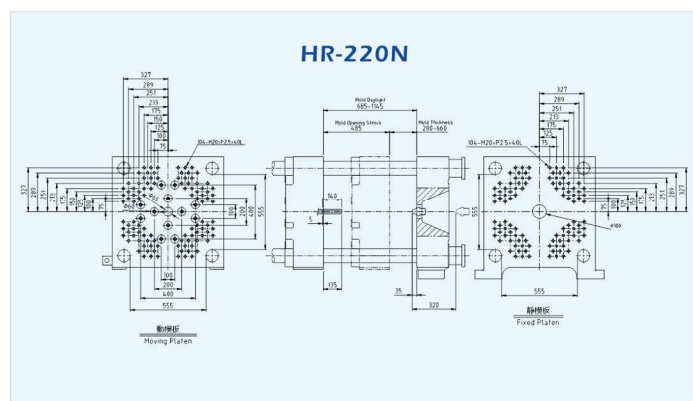
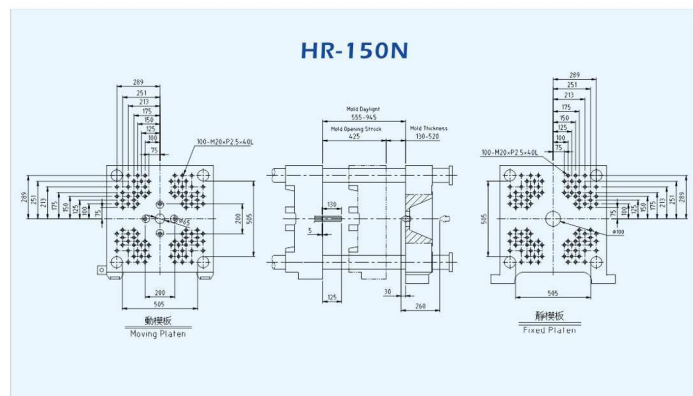
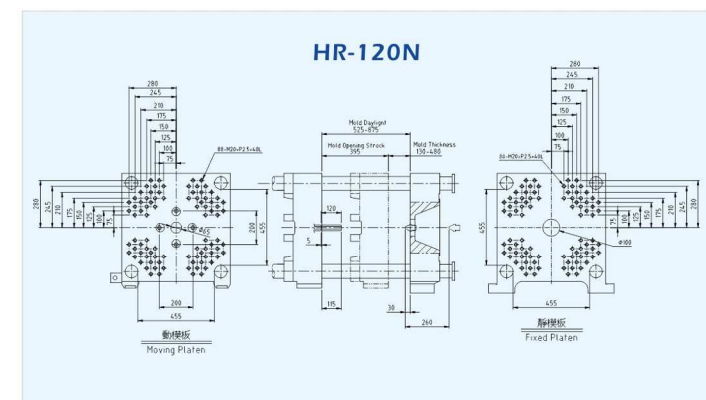
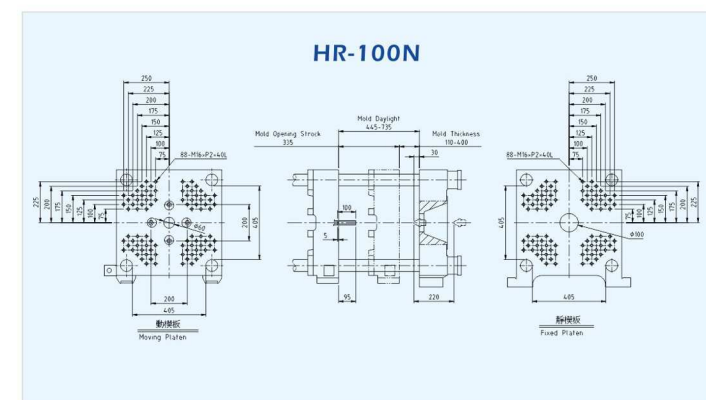
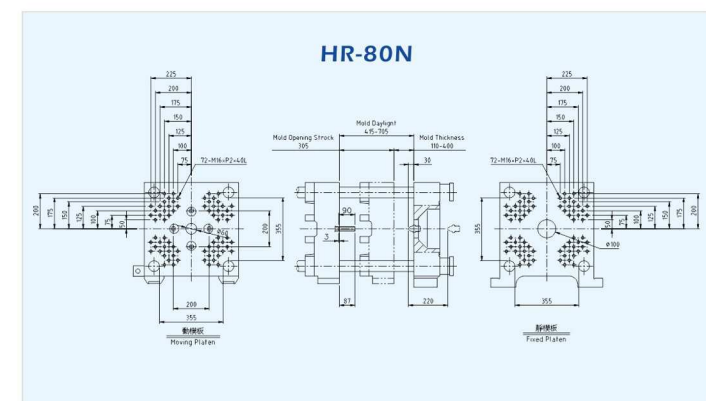
### Wire / Plug Machine

- Y系列射出機立式鎖模/立式注射，適用一般電器插頭，電子零件等小型嵌件成型，是PVC塑料專用機種
- 二(三段)溫度控制/射出速度/背壓等無段調整，更適合精密塑膠之零件成型
- 快速鎖模/低壓慢速關模，鎖模異常時則自動緊急開模，此特別的安全設計，對模具等能起保護作用

- Vertical clamping / vertical injection, suitable for general electrical plugs, electronic components and other small insert molding.
- Two (three stages) temperature control / injection speed / non-stage adjustment of back pressure, etc., more suitable for parts molding of precision plastic.
- Quick mold locking / low pressure low speed to mold lock, a special safety design to protect the mold.





[illegible]

## Excellent Injection Molding Machine